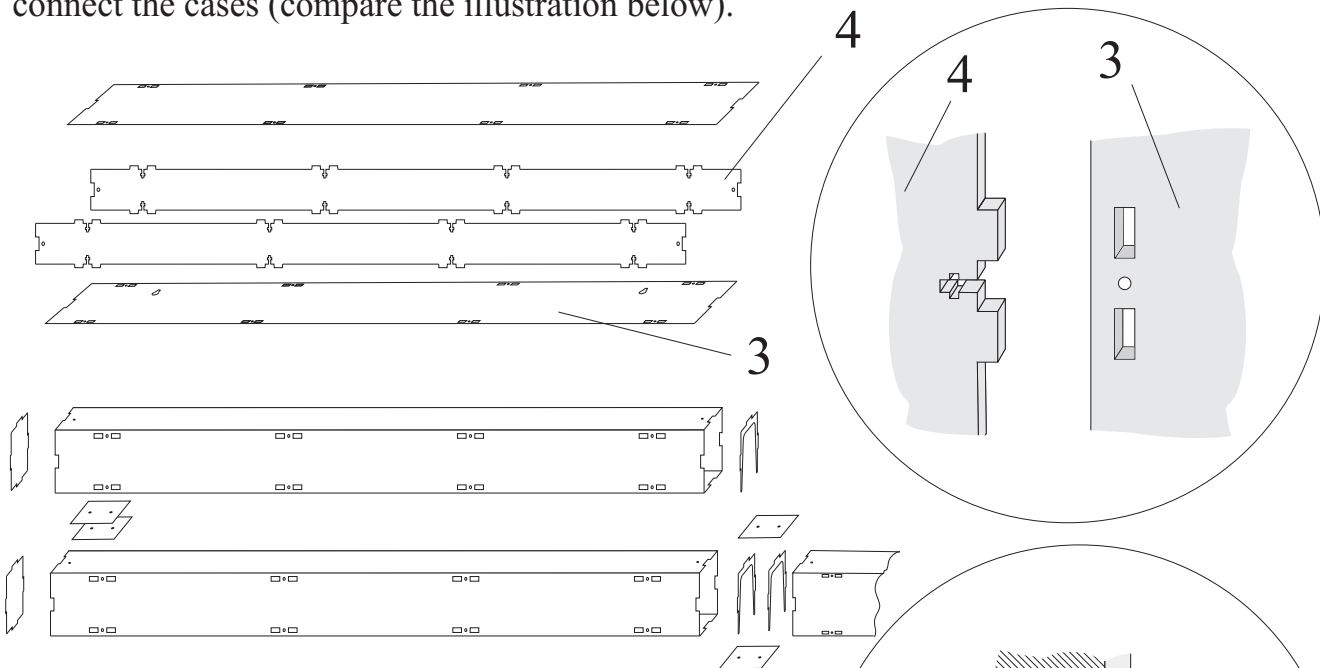


# N single-compartment display case, 750 mm width

Item.No.: 18300

Please remove protection film from the acrylic sheets before assembling.  
At first, please clip the the front and the back panel on the two side panels.  
Use the small screws and nuts to establish a tight connection.  
Important: Please fasten the screws only lightly to prevent overtightening.

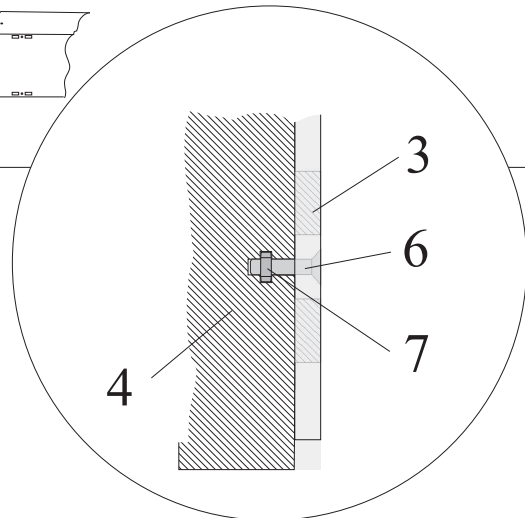
If you want to connect several H0-single compartment display cases either vertically or horizontally, please remove the back panels first. Use the connecting parts and the larger screws and nuts (M3) to connect the cases (compare the illustration below).



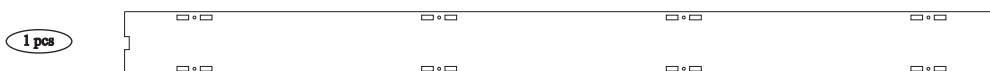
### individual parts:

- screws M2,5 : 16 pcs (Nr.: 6)
- nuts M2,5 : 16 pcs (Nr.: 7)
- screws and nuts M3 : 2 pcs

Please note:  
The connecting parts, as well as M3 screws and nuts are redundant if you use your display case as a single compartment case.



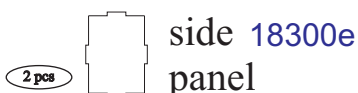
back panel  
transparent: 18300t  
reflective: 18300s  
black: 18300u



front panel  
18300b



top cover  
18300a



side panel 18300e



side panel (connecting part) 18300f



connecting part 18300g